

REMOS™

Designed to transform the way we manage temporary traffic works, REMOS™ introduces a new era where temporary traffic signals are controlled remotely, eliminating the need for onsite operatives, enhancing safety and reducing carbon emissions.

KEY BENEFITS:

- ✔ **Improved Safety** - Reduces the risk of accidents, injuries and roadworker abuse by minimising the need for onsite operatives.
- £ **Cost & Labour Savings** – One operator can manage multiple sites simultaneous from a central, secure location, streamlining human resources costs – as well as costs associated with travel to site and vehicle wear and tear.
- ✔ **Environmental** – Greatly reduce the number of site visits as well as vastly reducing idling time for roadworkers.

REMOS™ USE CASES - POTENTIAL SITE CONFIGURATIONS:

- ✔ 2 Way Shuttle
- ✔ 2 Way Shuttle with Single Pedestrian Crossing
- ✔ 3 Way (Multi Phase) Junction
- ✔ 3 Way Junction with Single Pedestrian Crossing
- ✔ 3 Way Junction with Double Pedestrian Crossing
- ✔ 4 Way (Multi Phase) Junction
- ✔ 4 Way Junction with Single Pedestrian Crossing
- ✔ 4 Way Junction with Double Pedestrian Crossing
- ✔ 4 Way Junction with Four Pedestrian Crossings

| | |
|---------------------------------|---|
| Max Stages | Monitor up to 8 stages / phases |
| Max Signals | 17 signals + 1 REMOS unit |
| Pedestrian Functionality | Yes |
| Compatibility | SolarLight can also be used with REMOS™ |

AVAILABLE TO HIRE OR PURCHASE

E hire@srtraffic.ie or sales@srtraffic.ie
 T 01 862 1093 W srtraffic.ie



Highways Approvals & Compliance

✔ Topas 2540A



Scan here for more **REMOS™** information

| PHYSICAL APPEARANCE | |
|---------------------------|--|
| Signal Head Configuration | Single Head Capability |
| Height | 2320mm |
| Box Dimensions | 465mm (H) x 700mm (W) x 860mm (D) |
| Overall | 2320mm (H) x 700mm (W) x 1070mm (D) |
| Weight (exc. batteries) | 84kg |
| Weight (inc. batteries) | 122kg |
| Security | Four bullet locks and one T-bar lock as standard |

| POWER | |
|--------------------|--|
| Battery Type | Lithium Phosphate |
| Run Time | 21 days *Based on 6 hour camera operation per day. Signals can run 24/7 |
| Battery Capacity | 460 Ah |
| No. of Batteries | 1 |
| Charge Time | 8 hours |
| Operating Voltage | 12v |
| Operating Current | 8w |
| Charging Mechanism | On |

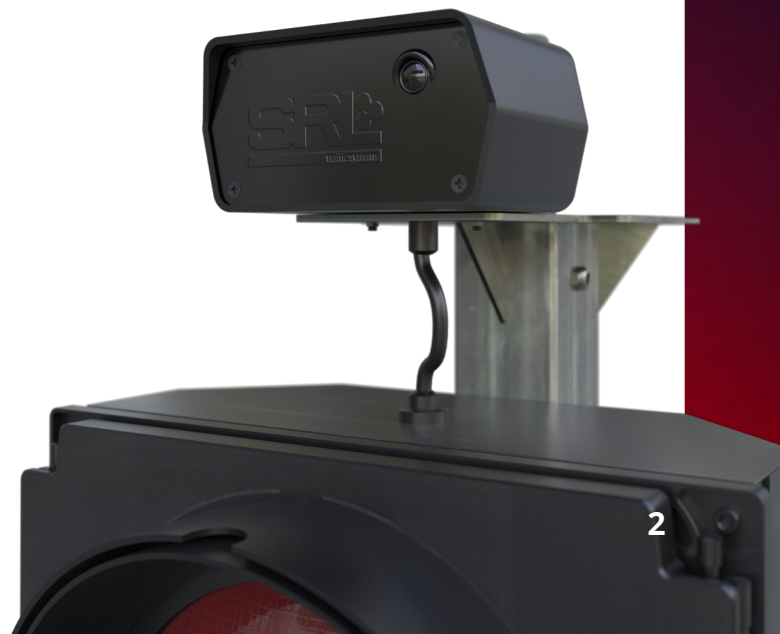
| REMOS™ OPERATOR – RESPONSIBILITIES & COMPETENCIES | |
|---|---|
| Extent of Control | <ul style="list-style-type: none"> • Demanding a stage with the immediate shutdown of an active stage once the active stage has run its minimum green • The demanded stage will not run its starting amber until the local safety red time has run its timer • 'All red' facility which is subject to local safety red times • Removing the REMOS™ manual operation will revert the signals to run local VA control dependent on site setup |
| Minimum Training Requirements | <ul style="list-style-type: none"> • Basic Introduction to Traffic Signals Course for REMOS Operators. IHE Approved, JCT Consultancy • NHSS 12D T7 Managers & Client Officers – LANTRA, UTS training • Comprehensive REMOS equipment and SRL Control Hub training |

| OPERATING MODES | |
|---------------------------|--|
| Default Mode of Operation | Multiphase ADS *Excluding pedestrian |
| All Red | Yes, set up on site, only |
| Red Time Method | 1 second increment changes |
| Adjustable Green Time | Yes, via SRL Control Hub. SRL's Control Centre can override max green time through manual control but cannot alter minimum green time or VA max timing |
| Adjustable Red Time | Yes, set up on site, only |
| Manual | Yes, set up on site, only |
| Fixed Time | Yes, set up on site, only |
| Day Programming | Yes, set up on site, only |
| Part Time Signalling | Yes, set up on site, only |
| Signal Dimming | Yes (auto-dimming) |
| UTMC Compatibility | No |
| Safety Class | TOPAS 2540A |
| Compliance | REMOS™ adheres to the Department for Transport's statutory guidelines and industry standards (BS EN 50556, BS EN 12675, BS EN 12368, BS EN 50293) |
| IP Rating | 56 |

| REMOS™ CAMERA | |
|-----------------|---|
| Camera Position | Next to the radar detector to the top of the signal |
| Resolution | TBC |
| Security | Embedded, military grade security with proven commercial deployed by federal agencies in the UK and US. |
| GDPR Compliance | Streamed in real-time only |
| Connectivity | Ability to stream in real-time. 99.5% multi-network SIM coverage |

AVAILABLE TO HIRE OR PURCHASE

E hire@srtraffic.ie or sales@srtraffic.ie
T 01 862 1093 W srtraffic.ie



| REMOS™ CONTROL ROOM | |
|-------------------------------|---|
| Hours of Operation | 07:00 – 19:00 |
| Location | SRL REMOS™ Centre, Radial Park, Birmingham Business Park, UK. |
| Operator Programme | SRL Control Hub, web-based browser |
| Room Security | Door access system for authorised personnel only |
| Primary Communication Network | Redundant, fibre-optic network for high-speed data transmission |
| Routing | Redundant routing with failover capabilities to ensure consistent connectivity to external networks |
| Switches | Managed switches with gigabit capability, Layer 3 with failover mechanisms for redundancy |
| Backup Communication Network | 24-hour UPS (backup power), as well as a secondary line in case of fibre-optic network failure. The primary runs at 1Gbps speed, the secondary is 500mbps |
| Standby | Backup PC and all hardware in case of failure |
| Personnel | REMOS Supervisor omnipresent to support escalation / process support with REMOS Operators |

REMOS™ SERVICE PROCESS

ONBOARDING

- Two weeks' notice prior to site start
- TM plans supplied and permit reviewed by REMOS team
- Local Authority engagement to check and detail timing plans
- Site survey form - start and end date, site moves, escalation, approval
- RAM list to include SRL for timings, only
- Control room operator assigned
- Communications and timings checked

SERVICE

- Traffic Management maintains responsibility for service and site issues reported by end user.
- Flexible service hours to fulfil permit requirements
- Service Log
- Service Report (automated audit trail)
- Escalations and Issue Log to Traffic Management

OFFBOARDING

- Scheduled end date in site survey
- Collection confirmed by REMOS team and liaison with depots
- Service decommissioned and control hub session terminated
- Service report issued



EMISSIONS MODELLING

REMOS™ has the potential to greatly reduce our carbon footprint around traffic management.

Indicative carbon emissions reduction of one operative removed from site for a full, working year.



AND fewer Health & Safety incidents, with improved worker morale!

AVAILABLE TO HIRE OR PURCHASE

E hire@srtraffic.ie or sales@srtraffic.ie

T 01 862 1093 W srtraffic.ie